
Vibration Motor

- Bar type -



GODO ELECTRONICS

Vibration Motor – Bar type

■ INTRODUCTION

Bar type vibration motor is generally cylinder shape and mostly phi 4(mm) and 5(mm) diameter. According to the body length of it, there are phi4x7mm, phi4x8mm,phi4x12mm, phi5x8mm,phi5.5x8mm.

Various sizes, operating voltage (3.0V) and counter weights (radius 2.0mm, radius2.5mm, Radius3.0mm etc) are available.

■ FEATURE AND APPLICATION

● Feature

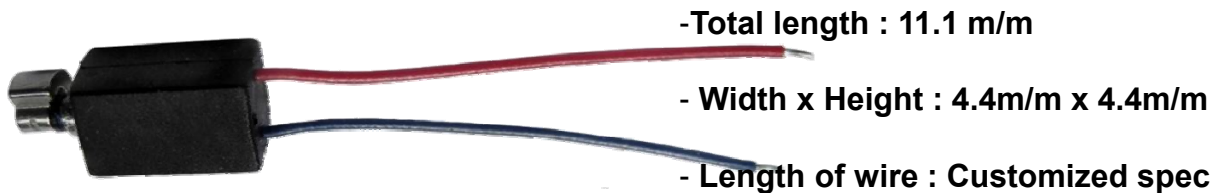
- Permanent magnet coreless DC motor.
- Miniature Size, light weight
- Smooth rotation due to no cogging
- Low noise and low power consumption
- Highly Reliable Performance

● Application

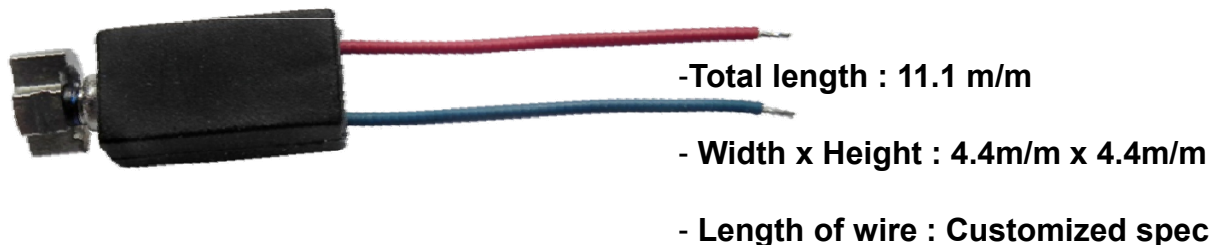
- Mobile phone
- PCS (Personal Communication by Satellite)
- PDA (Personal Digital Assistants)
- Game machine, Toy

Vibration Motor – Bar type

APPEARANCE AND DIMEMSION



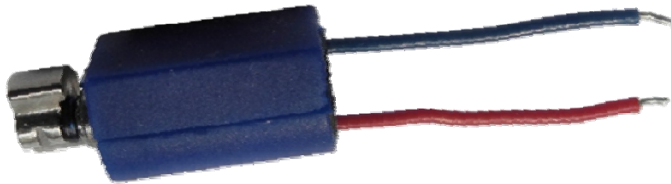
Model Name	Rated voltage	Rated current	Rated speed	Starting voltage	Resistance
GE0408-BLW01	3.0V	90mA (Max)	14,000 +/-3,000	2.4 V	30Ω+/-20%



Model Name	Rated voltage	Rated current	Rated speed	Starting voltage	Resistance
GE0408-BLW02	3.0V	90mA (Max)	12,000 +/-3,000	2.4 V	30Ω+/-20%

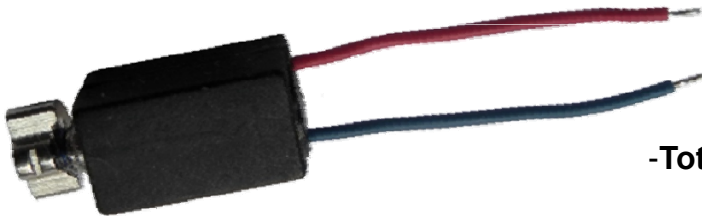
Vibration Motor – Bar type

APPEARANCE AND DIMENSION



- Total length : 11.1 m/m
- Width x Height : 4.7m/m x 4.7m/m
- Length of wire : Customized spec

Model Name	Rated voltage	Rated current	Rated speed	Starting voltage	Resistance
GE0408-BLW03	3.0V	90mA (Max)	14,000 +/-3,000	2.4 V	30Ω+/-20%

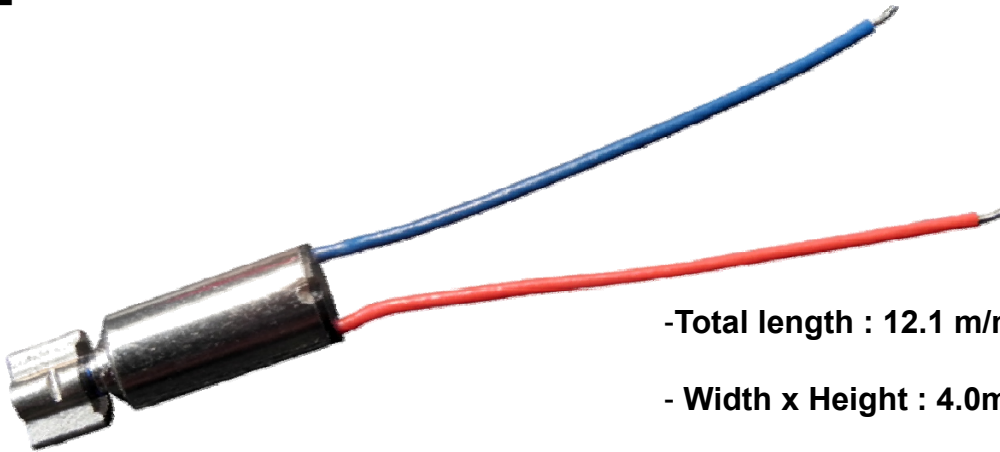


- Total length : 11.1 m/m
- Width x Height : 4.4m/m x 4.4m/m
- Length of wire : Customized spec

Model Name	Rated voltage	Rated current	Rated speed	Starting voltage	Resistance
GE0408-BLW04	3.0V	90mA (Max)	14,000 +/-3,000	2.4 V	30Ω+/-20%

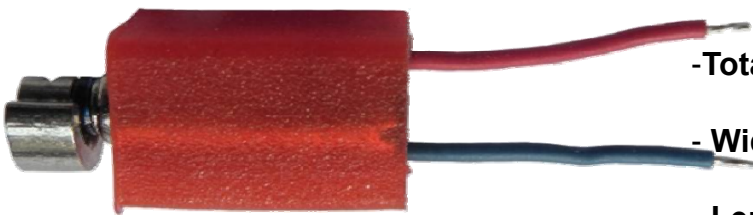
Vibration Motor – Bar type

APPEARANCE AND DIMENSION



- Total length : 12.1 m/m
- Width x Height : 4.0m/m x 4.0m/m
- Length of wire : Customized spec

Model Name	Rated voltage	Rated current	Rated speed	Starting voltage	Resistance
GE0408-BLW05	3.0V	90mA (Max)	11,000 +/-3,000	2.4 V	30Ω+/-20%

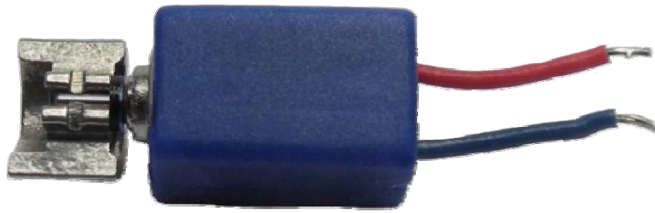


- Total length : 11.1 m/m
- Width x Height : 4.8m/m x 4.8m/m
- Length of wire : Customized spec

Model Name	Rated voltage	Rated current	Rated speed	Starting voltage	Resistance
GE0408-BLW06	3.0V	90mA (Max)	14,000 +/-3,000	2.4 V	30Ω+/-20%

Vibration Motor – Bar type

APPEARANCE AND DIMENSION



- Total length : 13.1 m/m
- Width x Height : 4.8m/m x 4.8m/m
- Length of wire : Customized spec

Model Name	Rated voltage	Rated current	Rated speed	Starting voltage	Resistance
GE0408-BLW08	3.0V	90mA (Max)	8,500 +/-3,000	2.4 V	30Ω+/-20%



- Total length : 11.4 m/m
- Width x Height : 4.4m/m x 4.4m/m
- Height of contact spring : 6.0m/m

Model Name	Rated voltage	Rated current	Rated speed	Starting voltage	Resistance
GE0408-BCSR01	3.0V	90mA (Max)	14,000 +/-3,000	2.4 V	30Ω+/-20%

Vibration Motor – Bar type

APPEARANCE AND DIMENSION



- Total length : 11.4 m/m
- Width x Height : 4.4m/m x 4.4m/m
- Height of contact spring : 6.0m/m

Model Name	Rated voltage	Rated current	Rated speed	Starting voltage	Resistance
GE0408-BCSR02	3.0V	90mA (Max)	14,000 +/-3,000	2.4 V	30Ω+/-20%



- Total length : 11.7 m/m
- Width x Height : 4.4m/m x 4.4m/m
- Height of contact spring : 5.5m/m

Model Name	Rated voltage	Rated current	Rated speed	Starting voltage	Resistance
GE0408-BCSR03	3.0V	90mA (Max)	14,000 +/-3,000	2.4 V	30Ω+/-20%

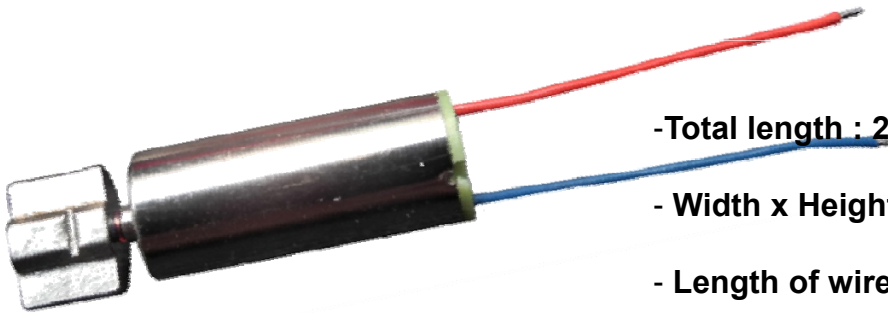
Vibration Motor – Bar type

APPEARANCE AND DIMENSION



- Total length : 11.8 m/m
- Width x Height : 5.1m/m x 5.8m/m
- Height of contact spring : 7.1m/m

Model Name	Rated voltage	Rated current	Rated speed	Starting voltage	Resistance
GE0408-BCSR04	3.0V	90mA (Max)	12,000 +/-3,000	2.4 V	30Ω+/-20%



- Total length : 20.0 m/m
- Width x Height : 6.0m/m x 6.0m/m
- Length of wire : Customized spec

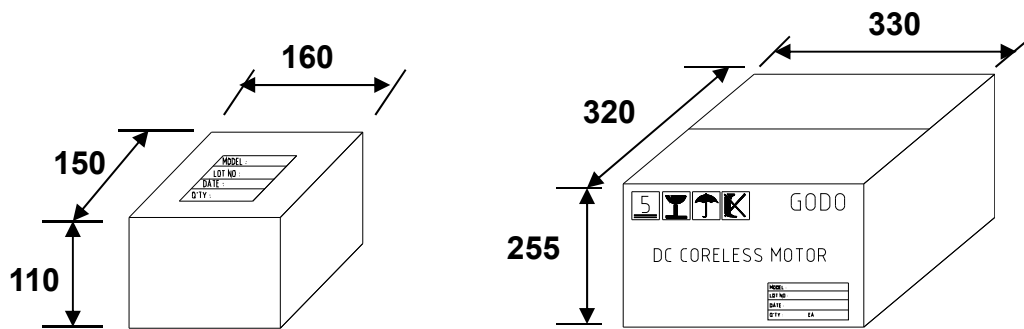
Model Name	Rated voltage	Rated current	Rated speed	Starting voltage	Resistance
GE0614-30LW01	3.0V	90mA (Max)	9,000 +/-3,000	2.4 V	30Ω+/-20%

Vibration Motor – Bar type

PACKAGING

● Outer Box

Box Dimension



< Inner Box >

▶ 14~16 ea tray

< Outer Box >

▶ 8 ea Inner Box (112~128 ea tray)

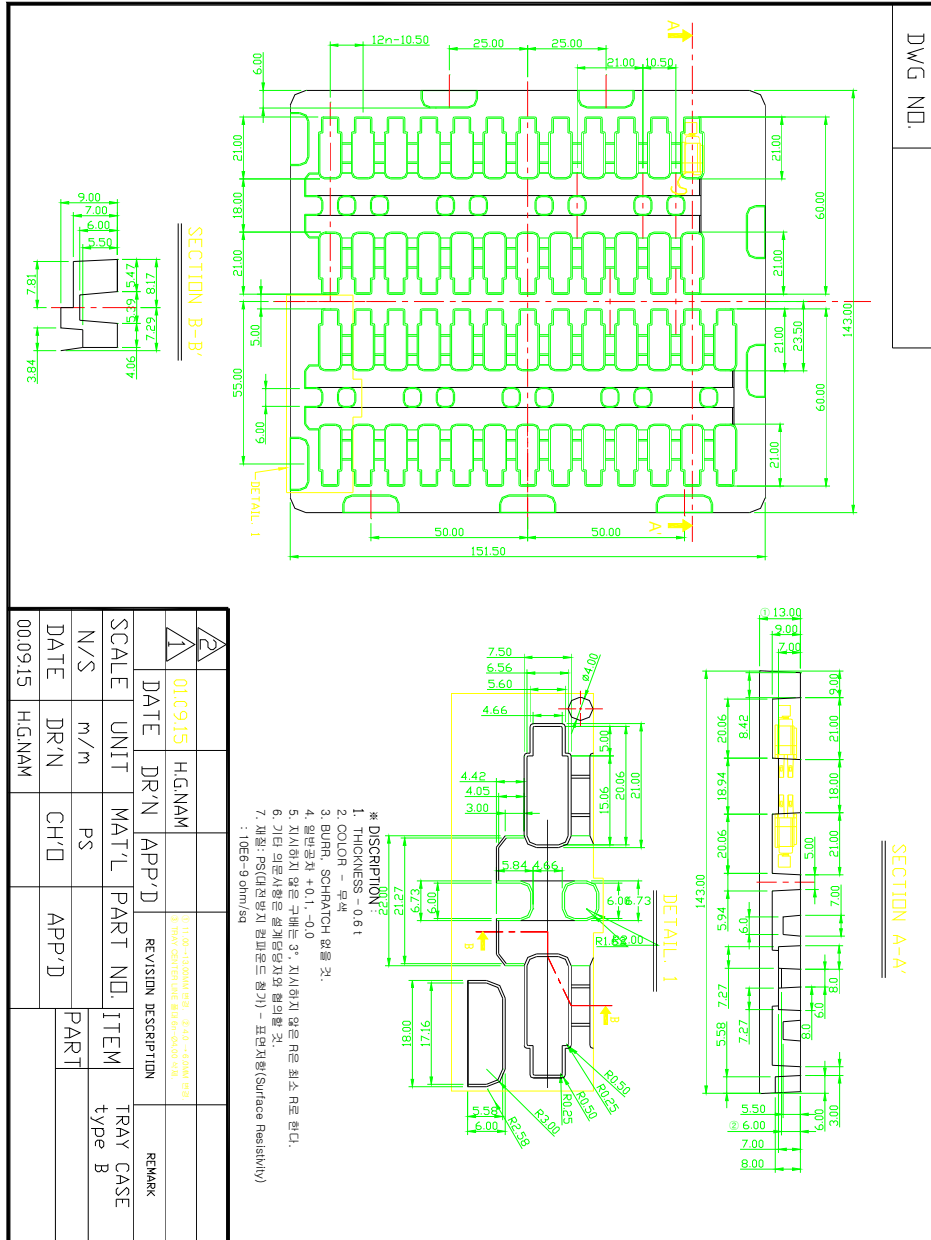
▶ 5,200 ~6,000ea / Outer Box

Q'ty / Lot		Dimension (L X D X H)	
5,200~6,000 ea		330 X 320 X 255	
NO	Material	Size (L x D x H)	Q'ty / Lot
1	Outer Box	320 x 330 x 255	5,200~6,000 ea
2	Inner Box	150 x 160 x 110	650~750 ea
3	Tray	143 x 151.50	50 ea
4			
5			

Vibration Motor – Bar type

PACKAGING

● Shock Absorbed Tray



Vibration Motor – Bar type

RELIABILITY TEST CONDITION

No	Item	Condition	Remark
1	Low temperature storage	Expose to -45°C, for 96hours, and then measure after exposing at normal temperature and humidity for 24hours.	
2	High temperature storage	Expose to +85°C, for 96hours, and then measure after exposing at normal temperature and humidity for 24hours.	
3	High temperature humidity storage	Expose to +50°C, 95%RH, for 120hours, and then measure after exposing at normal temperature and humidity for 24hours.	
4	Thermal Shock	Each cycle consists of 2hours at -40°C followed by 2hours at +85°C for 15cycles. Transition time is 5minutes max.	
5	Vibration	Sinewave vibrate at 60Hz amplitude of 1.5mm for 30minutes in each of 3 directions (X,Y,Z).	
6	Mechanical Shock	Drop from 1.5m in height onto a concrete floor with 100g dummy set. Test shall be performed twice in each of the six planes. (Total of 12 impacts)	
7	Life test	Test shall be performed 60,000cycles at 2.5sec ON, 2.5sec OFF, and rated voltage.	

- There should be no electrical and mechanical problem after environmental test
- Speed : Min +/-30% of original readings
- Current : Max +30% of original readings

Vibration Motor – Bar type

NOTICE

- (1) Do not press product with more than 1.5kg or drop it.
It can cause to change characteristics of motor or external appearance.
- (2) Do not drop this product into fluid (such as : water, alcohol etc)
- (3) Do not expose this product to high temperatures for a long time.
It may causes to decline characteristics of motor.
- (4) Do not use under the following conditions:
 - Near gases which causes erosion.
 - Around substances which produce toxic gases.
- (5) Please refrain from operating the motors near magnetic devices.
- (6) The motor has a strong magnet so please be aware that it has a magnetic force on the surface of the case
- (7) The motor may cause slight electronics noise due to the contact between brush and commutator. Please do not let the motor affect antenna, etc.
- (8) Packing : (Please refer to the packaging drawing.)
(It can be modified by the request of the users.)
- (9) If any problems occur, both the user and GODO Electronics shall try to solve the problem by mutual agreement and on reflection of the specification sheet.